

Homelessness is solvable.



ATOZ BI-MONTHLY REPORT
DECEMBER 2024



Department of
Communities



Prepared For: Housing First Homelessness Advisory Group & WAAEH Steering Committee

Status: Approved

Prepared by: Nghia Luong

Contents

About the Report	3
Section 1: Summary Data	4
WA AtoZ Communities	4
Section 2: Data by Community	6
Bunbury	6
Geraldton	7
Mandurah	8
Perth-Freo+	9
Rockingham	10
Section 3: Appendix	11
Data Caveats	11

About the Report

Data presented in this report is from the Advance to Zero (AtoZ) database known as the By-Name List (BNL). AtoZ member organisations have till the 10th of each month to complete updates for the previous month. Snapshots of the database are taken after the closing date for updating for various analyses and reporting, including this bi-monthly report for the Housing First Homelessness Advisory Group & WAAEH Steering Committee.

Purpose

The report is primarily prepared to inform the WAAEH Steering Committee of the work carried out by the WAAEH team supporting the AtoZ methodology and its contribution to the WAAEH's strategy to end homelessness. The WAAEH Steering Committee must approve the report before it is released.

Data Caveats

Please refer to the caveats section on page 10, which covers all the data and analysis in this report. The data caveats must be referenced/included when linking, referencing, or republishing the content or data used in this report.

Further Information

[AAEH](#) & [WAAEH](#)

- David Pearson, CEO AAEH & EO WAAEH
- Michala McMahon, Director of Practice and Improvement
- John Berger, Director – Strategy and Engagement

Data report

- Nghia Luong, WA State Data Lead

AtoZ Communities

- Bunbury:
Tasha Kernohan, Local Community Coordinator ([Accordwest](#)),
Jasmine Murray & Michelle Khoo, BNL Data Support
- Geraldton:
Emily Williams, Community Impact Advisor,
Jasmine Murray & Michelle Khoo, BNL Data Support
- Perth- Freo+:
Matt Wilkins, Senior Community Impact Advisor,
Nghia Luong, BNL Data Support
- Mandurah & Rockingham:
Nick Mathieson/Stacey Levell, MKR Zero Project Local Community Coordinator ([Anglicare WA](#)),
Jasmine Murray & Michelle Khoo, BNL Data Support

Section 1: Summary Data

WA AtoZ Communities



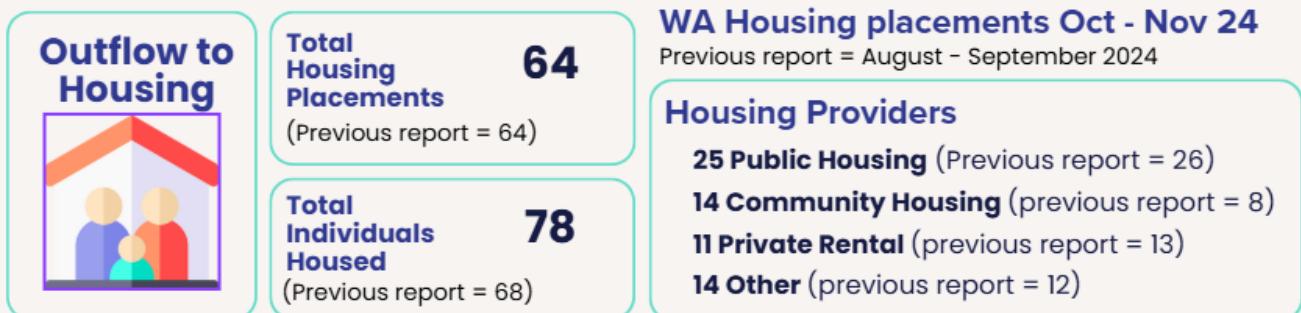
Observation

- There was a slight decline in the overall number of people experiencing homelessness. This appears to be an issue related to the timing of user updates and snapshots rather than an actual reduction, as the numbers on the live database have rebounded back to the upward trend.

The return from Housing Inflow was nearly double that of the last report, at 21. It was primarily driven by the Perth-Freo+ (17) region, where the issue of imbalance assertive outreach to case management workers means all the hard work in getting people on the BNL into permanent housing can be undone rapidly, including those housed in DM100 properties.

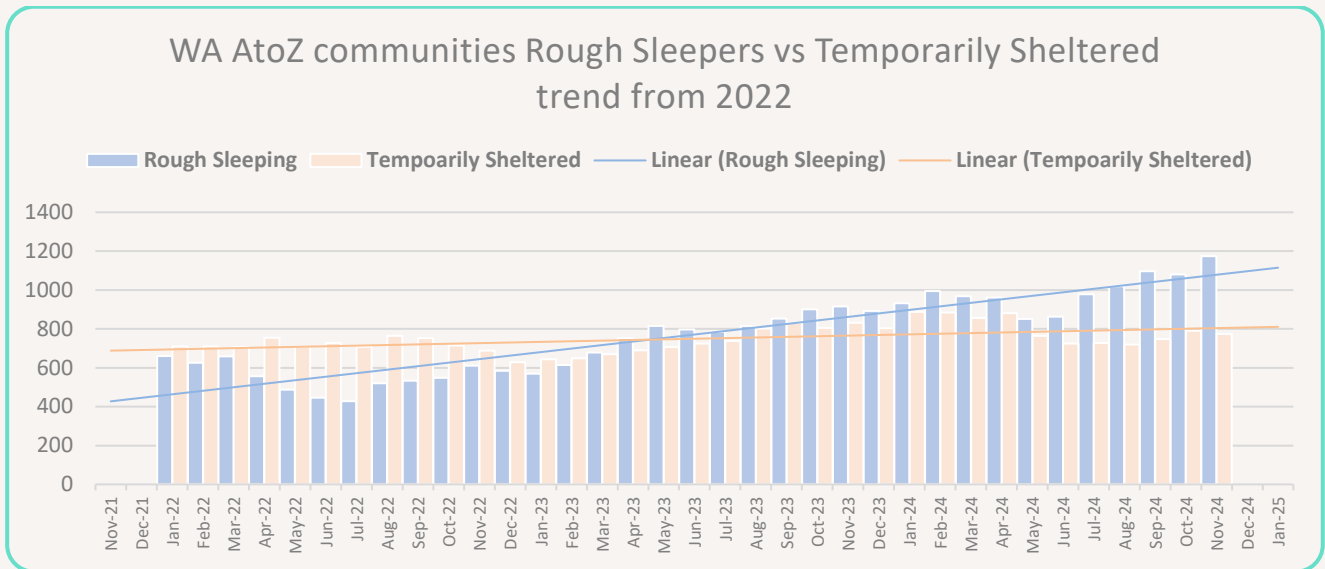
- The average VI-SDPAT completion rate across went down by 3%. Except for Geraldton, all other communities saw a reduction in VI-SDPAT completion rate.
- Four people were reported as deceased, bringing the total recorded deaths across the AtoZ communities to 39.

Outflow



- There were 64 housing placements across the AtoZ communities, ending homelessness for a total of 78 individuals.
- The leading housing provider for October and November was the Department of Communities - Housing, providing 41% of the properties.

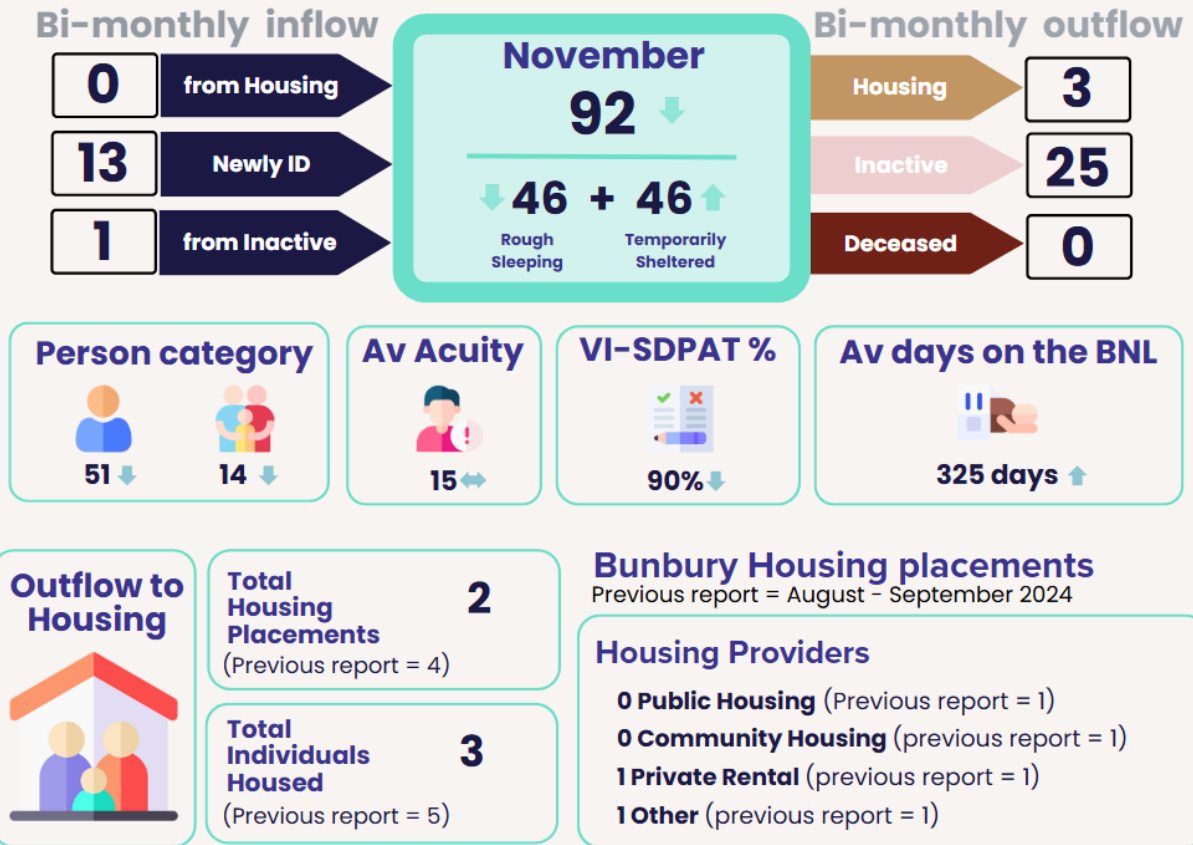
Run chart



This summary run chart of monthly homeless data across the 5 AtoZ communities shows that since January 2022, people in temporary accommodation on the BNLs have narrowly trended upward approximately by about 9%, ie about 64 people. At the same time, the number of people experiencing rough sleep has increased by more than 78%, ie about 514 individuals.

Section 2: Data by Community

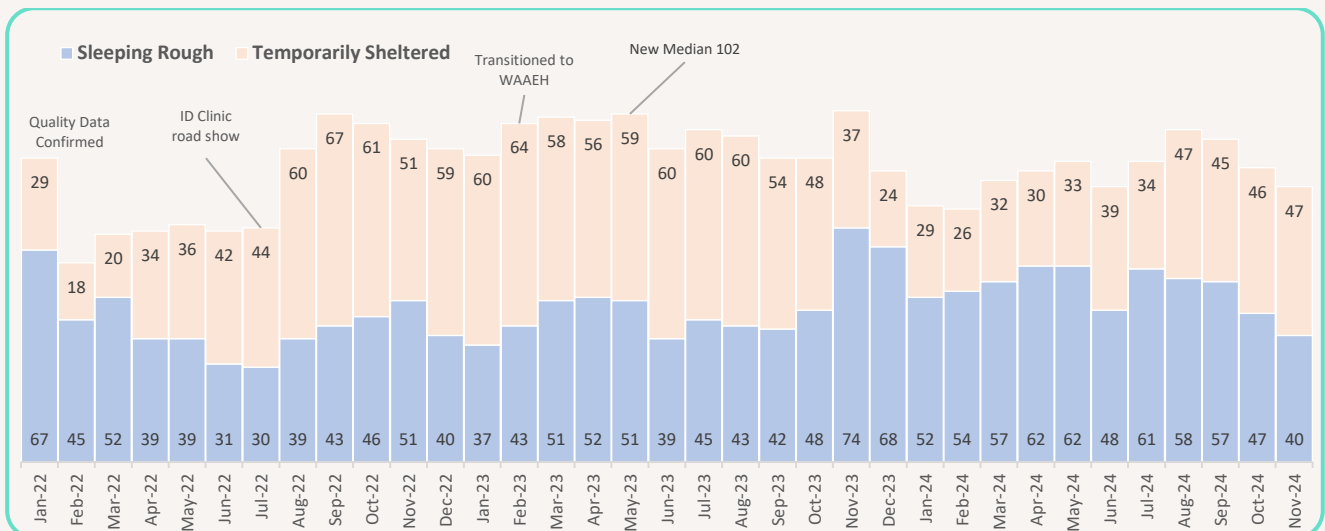
Bunbury



Observation/Insight

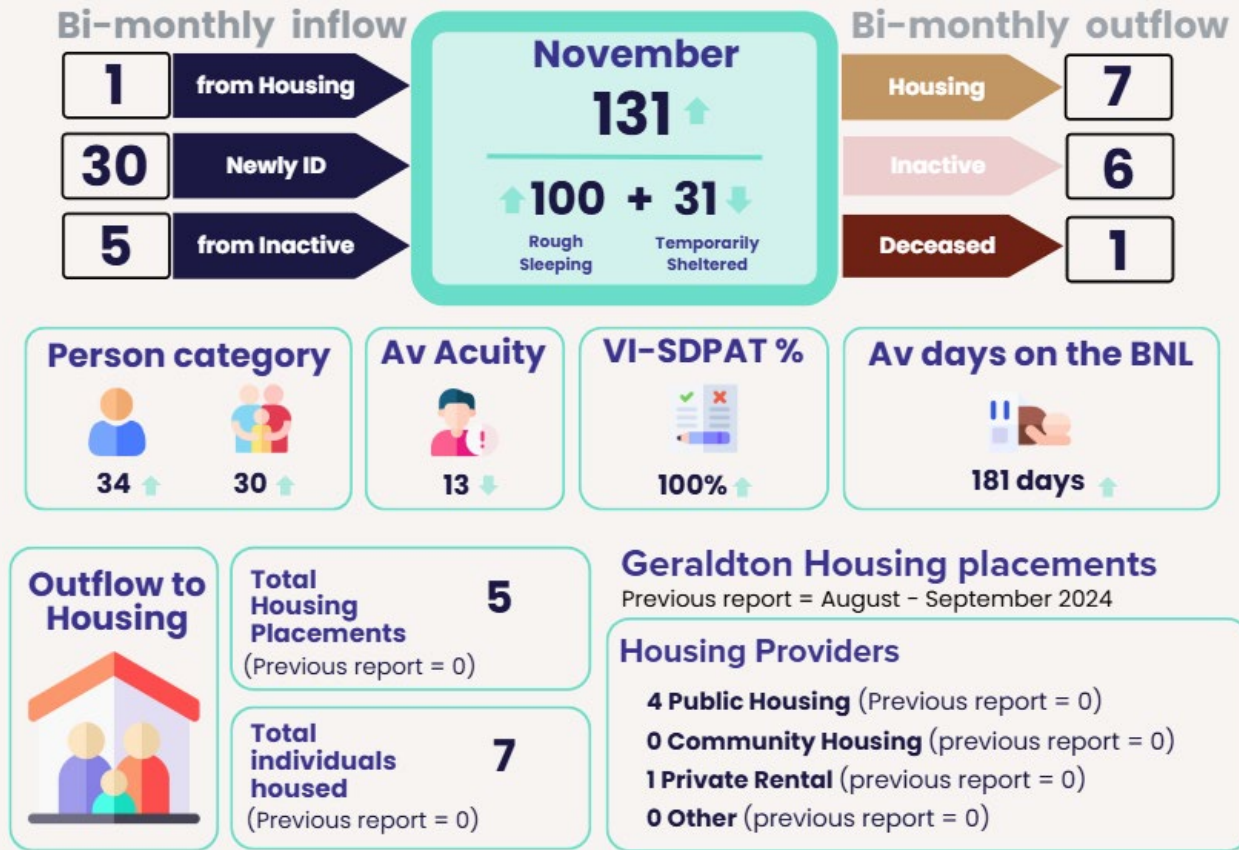
- In 2024, 48 people were permanently housed by the Bunbury Zero, reaching 96% of what was achieved in 2023.
- Bunbury Zero continues to see a decline in the total number of people experiencing homelessness, primarily driven by the combination of lower inflow (64% less than the previous report) and higher outflow (32% more than the last report) to inactive status that led to fewer people being recorded as sleeping rough.

Run Chart



The Bunbury BNL started after its Connections Weeks that was carried out between 5-8th of March 2021. The Connections Week [report](#) is available on the [WAAEH](#) website. Bunbury received certification for quality BNL data status from [Community Solutions](#) in January 2022. Note: The run Chart number does not match the dashboard infographic due to the timing of snapshots.

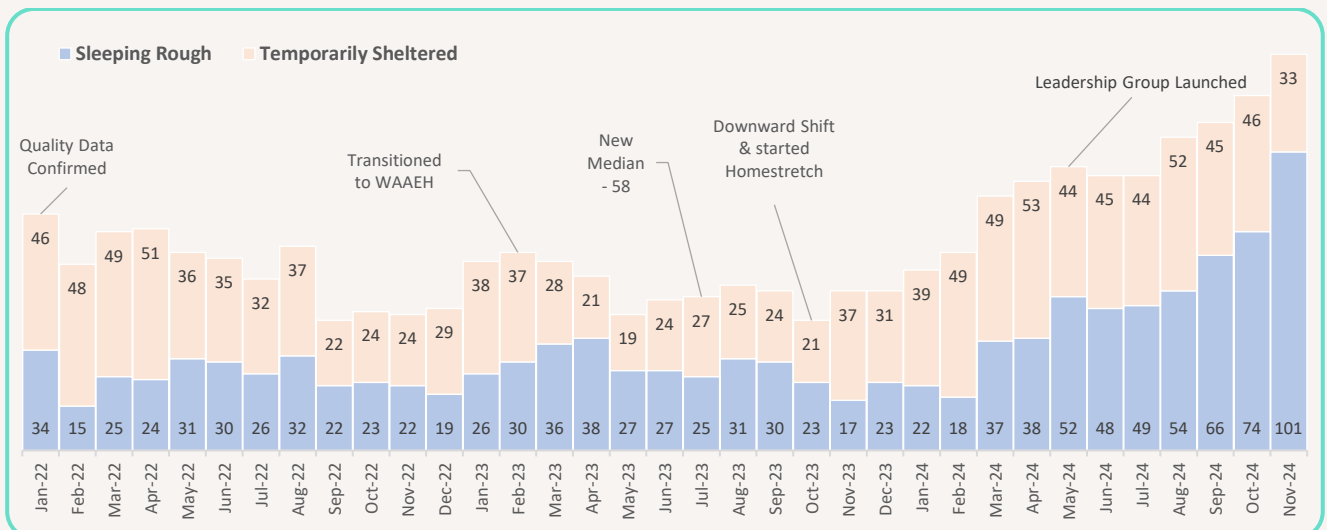
Geraldton



Observation

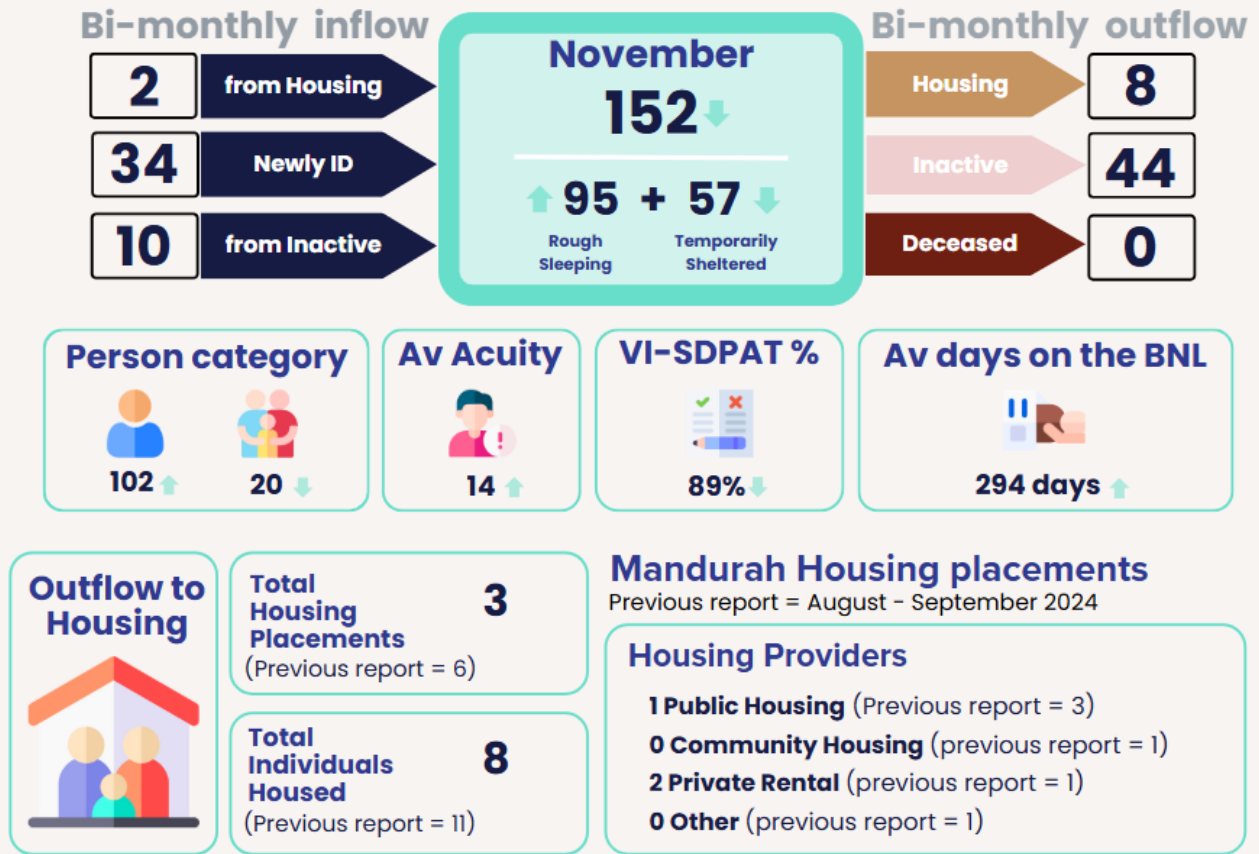
- In 2024, 47 people were permanently housed by the Geraldton Zero, reaching 85% of what was achieved in 2023.
- The number of families experiencing homelessness has increased by 36%, with the number of people experiencing rough sleeping has risen by 44% since the last report.
- People identified as First Nations make up 73% of Geraldton BNL.

Run chart



The Geraldton BNL started after its Connections Weeks that was carried out between 16 -20th November 2020. The Connections Week [report](#) is available on the [WAAEH](#) website. Bunbury received certification for quality BNL data status from [Community Solutions](#) in January 2022. Note: The run Chart number does not match the dashboard infographic due to the timing of snapshots.

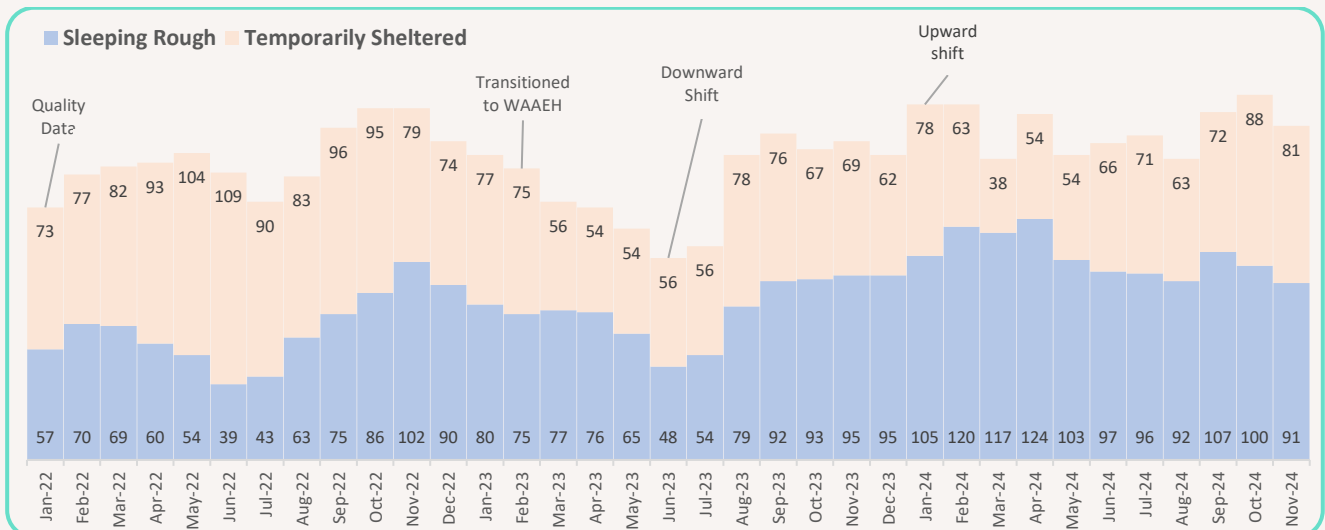
Mandurah



Observation

- In 2024, 83 people were permanently housed by the Mandurah Zero, reaching 122% of what was achieved in 2023.
- High bi-monthly inflow and outflow to inactive status helped Mandurah Zero maintain a stable total number of people experiencing homelessness. Inflow from returned from inactive averaged 35% for the last 2 reports, which may indicate an issue with the consistency of data updates.

Run chart



The Mandurah BNL started after its Connections Weeks that was carried out between 18 - 22 January 2021. The Connections Week [report](#) is available on the [WAAEH](#) website. Bunbury received certification for quality BNL data status from [Community Solutions](#) in January 2022. Note: The run Chart number does not match the dashboard infographic due to the timing of snapshots.

Perth-Freo+

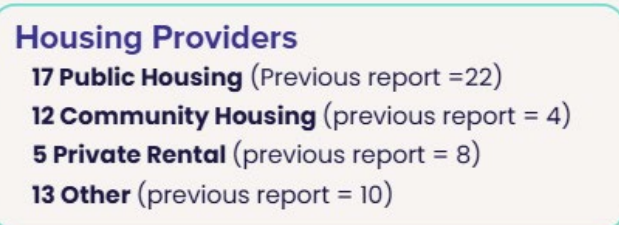
Bi-monthly inflow



Bi-monthly outflow



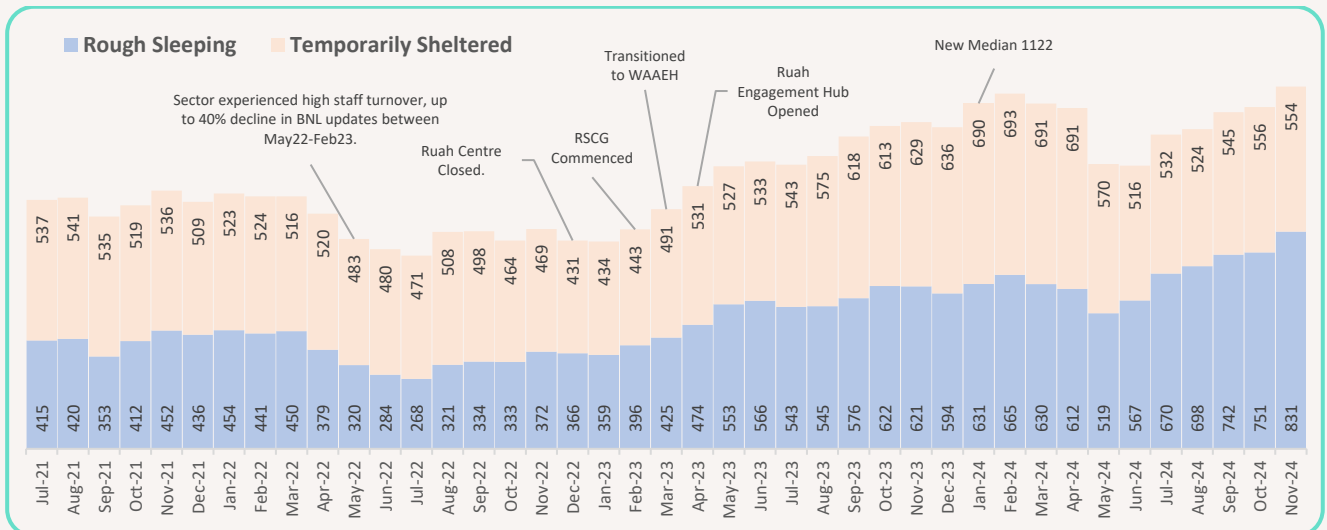
Perth-Freo+ Housing placements
Previous report = August - September 2024



Observation/Insight

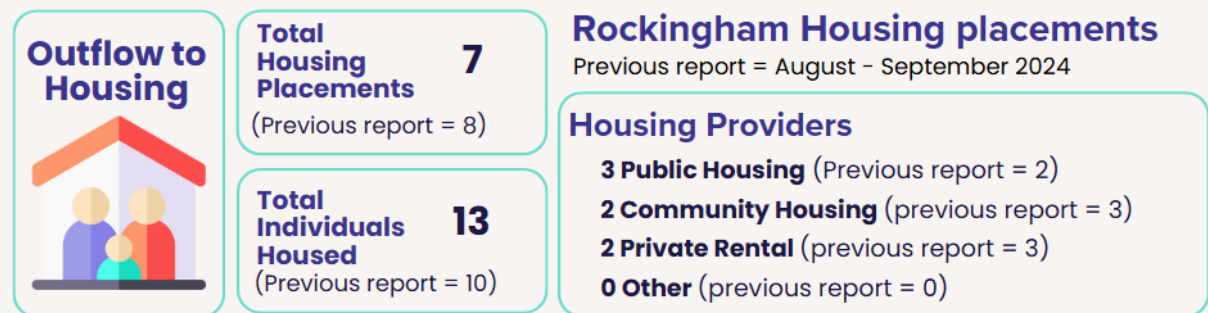
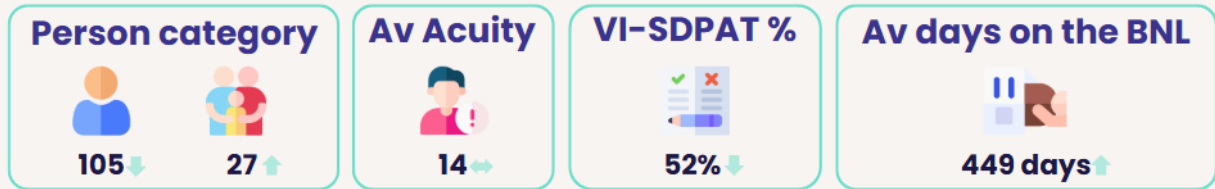
- In 2024, 268 people were permanently housed by the Perth-Freo+ Zero, reaching 97% of what was achieved in 2023.
- Over the last 3 reports, an average of 42% of people made inactive returned to homelessness, indicating there may be an issue with the consistency of data updates.
- There was a 23% increase in the number of families added to the Perth-Freo+ BNL, consistent with feedback at Rough Sleepers Coordinated Group from Engagement Hubs and outreach services that they have been seeing more families.

Run chart



The Perth-Freo+ BNL holds data from Registry and Connections Week dating back to 2012 when Ruah Community Services first started collecting VIs & VI-SPDATs with rough sleepers. Perth-Freo+ received certification for quality BNL data status from [Community Solutions](#) in June 2021. Note: The run Chart number does not match the dashboard infographic due to the timing of snapshots.

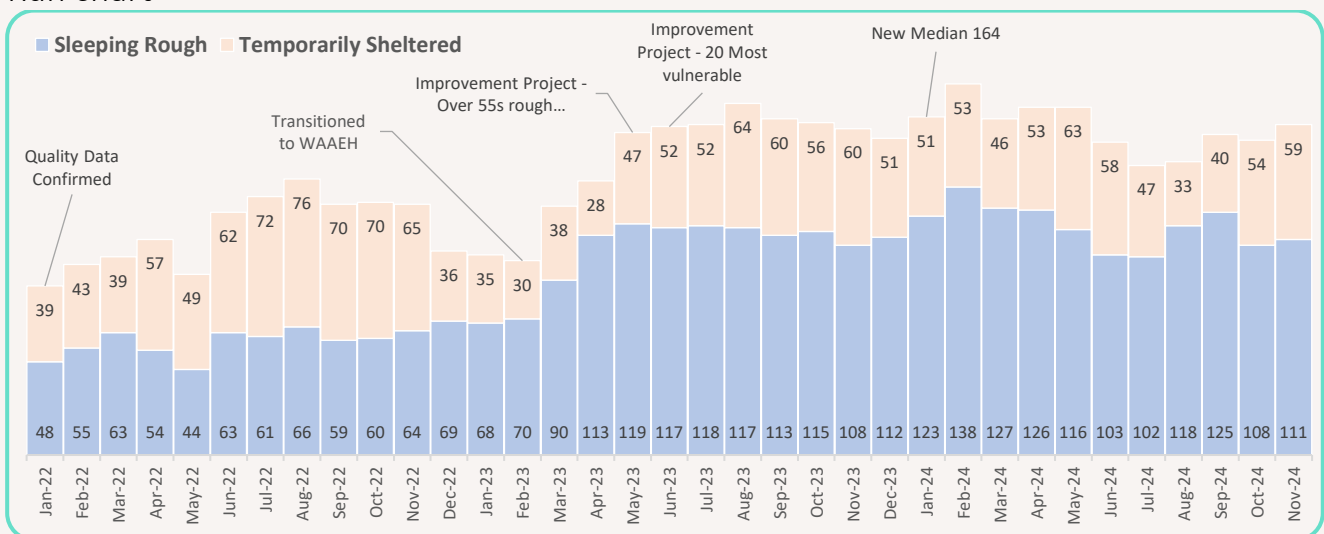
Rockingham



Observation/Insight

- In 2024, 50 people were permanently housed by the Rockingham Zero, only reaching 65% of what was achieved in 2023.
- Consistent inflow from newly identified as homeless has pushed Rockingham Zero to a higher total number of people experiencing homelessness towards the end of 2024. While there were large outflows to inactive throughout the year, they did not return to active homeless via the inflow returned from inactive.

Run chart



The Rockingham BNL started after its Connections Weeks that was carried out between 9 - 13 November 2020. The Connections Week [report](#) is available on the [WAAEH](#) website. Bunbury received certification for quality BNL data status from [Community Solutions](#) in January 2022. *Note: The run Chart number does not match the dashboard infographic due to the timing of snapshots.*

Section 3: Appendix

Data Caveats

Data released by WAAEH is only for indicative information on rough sleeping and chronic homelessness and should not be treated as definitive 'numbers' due to the below reasons,

- The inflow/out data may not match/ appear balanced from month to month due to omitted data categories.
 - ie people reported as self-housed are not included in the outflow to permanent housing count as there is no data on the permanency of those placements. They are, instead, included in the Inactive count.
- Retrospective data added by users.
- BNL data will vary from day to day because it's a 'live' database, and users are constantly updating.
- At least 90% of rough sleepers are believed to be captured on BNL from the outreach work carried out by member organisations.
- Depending on the community, up to 60% of the people on the BNL do not have support from a lead organisation or worker. Data updates for people without lead organisation/worker can be intermittent.
- Some on the BNL may not receive updates until months after the event (ie updates are retrospectively added).
- It's not intended to be research quality data, ie, extracted snapshots only reflect what member organisations have added to the BNL at the time.
- It's not a mandatory database for member organisations. Contribution is solely based on the goodwill for a collaborative approach to ending homelessness.
- People on the BNL only required a monthly update to be included in the active homeless count.
- The BNL data and the dashboards published by the WAAEH are not a snapshot of all homelessness. The AtoZ approach is intentionally focused on the most vulnerable and disengaged homeless cohorts, those who are rough sleeping & chronically homeless.
- It's not intended to be a statewide data capture. A high rate of data contribution comes from support services such as engagement hubs and assertive outreach teams.
- The Perth-Freo+ data currently cannot be isolated to LGAs. It's important to note that many people experiencing homelessness move fluidly between Perth, Fremantle, and many other areas.
- The Perth, Fremantle+ BNL may not align with the current Housing First (HF) funded service areas as the database predates the HF initiatives. A prototype of the BNL was used by Ruah's 50Lives50Homes Project in 2016.
- Young people and families are suspected to be underrepresented on the BNL data on the Perth-Freo+ BNL.